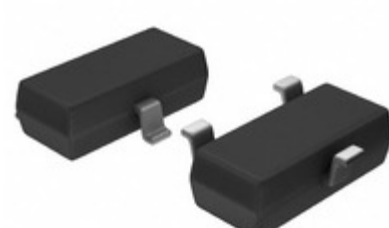


APX810S00-40SR-7



Part Number: [APX810S00-40SR-7](#)
Manufacturer: [Diodes Incorporated](#)
Description: RESET GENERATOR SOT23
Data sheet: [PDF](#) [APX809S, APX810S](#)

RoHS Status: Lead free / RoHS Compliant
Ship From: Hong Kong
Shipment Way: DHL/Fedex/TNT/UPS/EMS

Images are for reference only.
 See Product Specifications for product details.
 Buy APX810S00-40SR-7 with confidence from
 Component-World.HK, 1 Year Warranty

[Request For Quotation](#)

PRODUCT PARAMETER

Part Number	APX810S00-40SR-7	Manufacturer	Diodes Incorporated
Description	RESET GENERATOR SOT23	Lead Free Status / RoHS Status	Lead free / RoHS Compliant
Quantity Available	628908 pcs	Data sheet	APX809S, APX810S
Category	Integrated Circuits (ICs)	Voltage - Threshold	4V
Type	Simple Reset/Power-On Reset	Supplier Device Package	SOT-23
Series	-	Reset Timeout	1 ms Minimum
Reset	Active High	Packaging	Tape & Reel (TR)
Package / Case	TO-236-3, SC-59, SOT-23-3	Output	Push-Pull, Totem Pole
Operating Temperature	-40°C ~ 125°C (TA)	Number of Voltages Monitored	1
Mounting Type	Surface Mount	Manufacturer Standard Lead Time	12 Weeks
Lead Free Status / RoHS Status	Lead free / RoHS Compliant	Detailed Description	Supervisor Push-Pull, Totem Pole 1 Channel SOT-23

Component-World.com is a Reliable Stocking Distributor of Electronic Components. We specialize in all Diodes Incorporated series electronic components. We have 628908 pieces of Diodes Incorporated APX810S00-40SR-7 in stock available now. Request a quote from electronics components distributor at Component-World.com, our sales team will contact you within 24 hours.

RFQ Email: info@Components-World.com

RELATED PRODUCTS

	Part#: APX810S05-29SR-7 Description: IC RESET GENERATOR SOT23	Manufacturers: Diodes Incorporated	RFQ
	Part#: APX810S00-44SR-7 Description: RESET GENERATOR SOT23	Manufacturers: Diodes Incorporated	RFQ
	Part#: APX810S00-23SR-7 Description: RESET GENERATOR SOT23	Manufacturers: Diodes Incorporated	RFQ
	Part#: APX810S00-44SA-7 Description: RESET GENERATOR SOT23	Manufacturers: Diodes Incorporated	RFQ
	Part#: APX810S05-26SR-7 Description: RESET GENERATOR SOT23	Manufacturers: Diodes Incorporated	RFQ
	Part#: APX810S00-26SA-7 Description: RESET GENERATOR SOT23	Manufacturers: Diodes Incorporated	RFQ
	Part#: APX810S00-31SR-7 Description: RESET GENERATOR SOT23	Manufacturers: Diodes Incorporated	RFQ
	Part#: APX810S-46SR-7 Description: IC MPU RESET CIRC 4.63V SOT23R-3	Manufacturers: Diodes Incorporated	RFQ
	Part#: APX810S00-23SA-7 Description: RESET GENERATOR SOT23	Manufacturers: Diodes Incorporated	RFQ
	Part#: APX810S00-40SA-7 Description: RESET GENERATOR SOT23	Manufacturers: Diodes Incorporated	RFQ
	Part#: APX810S00-46SA-7 Description: RESET GENERATOR SOT23	Manufacturers: Diodes Incorporated	RFQ
	Part#: APX810S00-26SR-7 Description: RESET GENERATOR SOT23	Manufacturers: Diodes Incorporated	RFQ
	Part#: APX810S05-26SA-7 Description: RESET GENERATOR SOT23	Manufacturers: Diodes Incorporated	RFQ
	Part#: APX810S00-29SR-7 Description: IC RESET GENERATOR SOT23	Manufacturers: Diodes Incorporated	RFQ
	Part#: APX810S00-46SR-7 Description: RESET GENERATOR SOT23	Manufacturers: Diodes Incorporated	RFQ
	Part#: APX810S05-23SR-7 Description: RESET GENERATOR SOT23	Manufacturers: Diodes Incorporated	RFQ
	Part#: APX810S00-31SA-7 Description: RESET GENERATOR SOT23	Manufacturers: Diodes Incorporated	RFQ
	Part#: APX810S05-29SA-7 Description: RESET GENERATOR SOT23	Manufacturers: Diodes Incorporated	RFQ
	Part#: APX810S05-23SA-7 Description: RESET GENERATOR SOT23	Manufacturers: Diodes Incorporated	RFQ
	Part#: APX810S00-29SA-7 Description: RESET GENERATOR SOT23	Manufacturers: Diodes Incorporated	RFQ

Related keywords for APX810S00-40SR-7

Diodes Incorporated APX810S00-40SR-7	APX810S00-40SR-7 distributor	APX810S00-40SR-7 supplier	APX810S00-40SR-7 price
APX810S00-40SR-7 download datasheet	APX810S00-40SR-7 datasheet	APX810S00-40SR-7 stock	buy APX810S00-40SR-7
Diodes Incorporated APX810S00-40SR-7	Diodes Inc APX810S00-40SR-7	Pericom Semiconductor APX810S00-40SR-7	Zetex Semiconductors (Diodes Incorporated) APX810S00-40SR-7